



# 2025

## Sponsorship Opportunities

Ele's Place – West Michigan



November  
1-30

# Your support changes lives.

Thanks to community partners like you, Ele's Place can make a true difference in the lives of grieving children and teens.

For more than a decade, we have been providing vital bereavement services to kids who have lost a parent, sibling or anyone significant in their life, right here in West Michigan. With your support, we can keep our services **100% free** to families and partner schools, and to help ensure our organization's vision that no child or teen grieves alone.

I'm excited to share our 2025, Sponsorship Opportunities Package for your consideration. If you have questions, I'd be happy to connect anytime. Nothing we do is possible without the passion and commitment of this generous community!

With Gratitude,



**Tammy Campbell**

Director, Ele's Place – West Michigan



**1 in 11**

children in Michigan will experience the death of a parent or sibling before the age of 18

**\$0**

cost for Ele's Place families to utilize our services for as long as they need

**100%**

funded by donors and community partners like you

**5,000+**

individuals served in our community, thanks to your support



“ Every time I walk through the doors of Ele's Place, I'm reminded of the hole that grief can leave in a young heart. My father died of leukemia when I was just four years old. It was a time in my life marked by memories of confusion, anger and deep sadness. Amid the darkness, Ele's Place emerged as a beacon of hope, offering my family the lifeline we needed to navigate our storm of sorrow. It was a safe haven where we could meet and connect with others who understood the profound loss we had experienced. With the support of Ele's Place, we learned to heal, find solace and reclaim our lives. ”

— Stacia Morrison  
Former Ele's Place participant, Ele's Place – West Michigan Community Board Vice Chair, and Courage, Comfort & Cocktails Committee Chair

# Children's Grief Awareness Month

November 1-30 2025 ♥ Sponsorship Opportunity



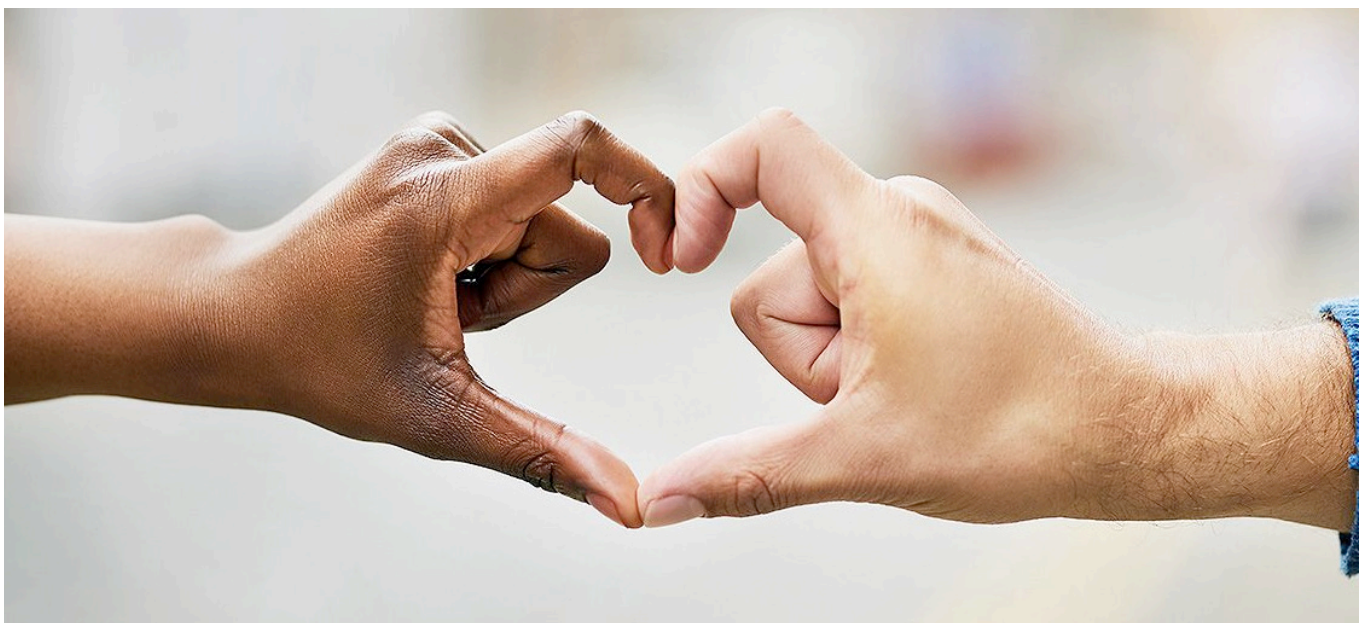
Ele's Place is proud to be a member of the National Alliance for Grieving Children and together we are committed to giving grief a voice. Throughout November – in observance of Children's Grief Awareness Month – please consider sponsoring a child or teen.

## Presenting Sponsor - \$10,000

- ♥ Sponsorship exclusivity
- ♥ Logo recognition in official Courage, Comfort & Cocktails program book in October 2025
- ♥ Weekly logo recognition for the month of November on social media; Facebook, Instagram and LinkedIn
- ♥ In person photo opportunity at Ele's Place West Michigan

## Sponsor for a day - \$600

- ♥ Sponsor a child with a one-time gift of \$600, providing a full year of support to a child or teen attending Ele's Place. You choose a day in November, and we'll share your quote, photo or story to more than 4,000 of our social followers



# Sponsorship Agreement

Children's Grief Awareness Month ♥ November 1–30, 2025

---

**I understand that by signing this agreement, I am committing my organization to sponsor at the following level(s):**

Presenting Sponsor - \$10,000

Sponsor for a day - \$600

We are unable to sponsor, but wish to make a tax-deductible gift of \$ \_\_\_\_\_ to Ele's Place – West Michigan.

\_\_\_\_\_  
Company Name (as you wish to be listed)

\_\_\_\_\_  
Mailing Address

\_\_\_\_\_  
City

\_\_\_\_\_  
State

\_\_\_\_\_  
Zip Code

\_\_\_\_\_  
Contact Name

\_\_\_\_\_  
Telephone

\_\_\_\_\_  
Email Address

\_\_\_\_\_  
Company Representative Signature

\_\_\_\_\_  
Date

\_\_\_\_\_  
Ele's Place – West Michigan Representative Signature

\_\_\_\_\_  
Date

Please submit this form, along with a check made payable to Ele's Place – West Michigan, to:

Ele's Place – West Michigan  
2000 Michigan Street NE  
Grand Rapids, MI 49503



To pay via credit card or if you have additional questions, please contact Kristy Ziegler at 616-301-1605 x5103 or [kziegler@elesplace.org](mailto:kziegler@elesplace.org).

# Ele's Place – West Michigan is 100% funded by donors like you.



All programs offered by Ele's Place are FREE OF CHARGE to families, thanks to the support of individuals, local corporations and businesses, foundation grants and third-party fundraisers. Your sponsorship makes it possible for Ele's Place – West Michigan to offer the following services:

- On-site and virtual bereavement support groups
- School-based programs in West Michigan schools
- Free clinical consultations for grieving families and community members
- Adult support groups for parents and guardians of children attending groups

## Our Mission

Ele's Place is a non-profit, community-based organization dedicated to creating awareness of and support for grieving children, teens, and their families.

## Our Vision

To ensure no child or teen in Michigan grieves alone.



Ele's Place – West Michigan | 2000 Michigan St. NE | Grand Rapids, MI 49503  
(616) 301-1605